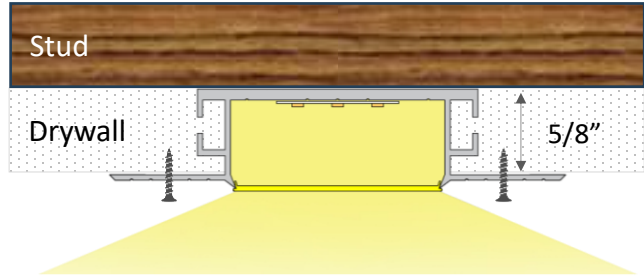
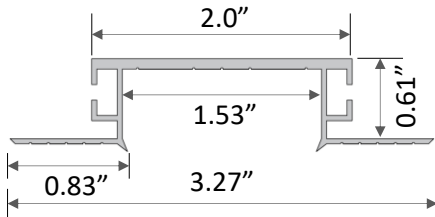


The JC01, a mid-sized, flangeless extrusion, strikes a balance between compactness and functionality. Constructed from durable anodized aluminum and boasting an easy-to-install profile that sits comfortably under standard 5/8 drywall without requiring stud adjustments. This versatile extrusion is a go-to for a wide range of lighting projects, accommodating diffusers up to 65 feet 6 inches in length, ensuring a seamless appearance even for long runs.

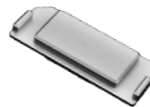
## JC01 + JC01-SLS Seamless Satined Lens



Seamless Lens available up to 65'



JC01-EC  
End Cap



BL15-CN180  
Connector



BL15-CN90  
90° Connector



### Product Detail

Material:	Extruded Aluminum
Color:	Anodized Silver
Dimension (in):	L 78.74" x W 3.27" x H 0.61"
Customization:	Cut to specified length

### Applications

- Recessed Flangeless
- Transition Wall/Ceiling
- Hallways
- Vanity
- Office
- Retail

## Compatible LED Tapelight

Product	Output (lm/ft)	LEDs/ft	Consump. (watt/ft)	Efficacy (lm/watt)	CRI	Voltage	Max Length	Min Cut
---------	----------------	---------	--------------------	--------------------	-----	---------	------------	---------

### Oslo (Multi-Row)

L730	~ 730	146	8.9	~ 82	>95	24V	47'	0.5"
------	-------	-----	-----	------	-----	-----	-----	------








### Florence (Specification Grade)

L90	~ 90	36	~ 0.73	~ 123	>90	24V	75'	1.97"
L200	~ 200	36	~ 1.46	~ 140	>90	24V	49'	1.97"
L360	~ 360	36	~ 3.12	~ 117	>90	24V	42'	1.97"
L500	~ 500	36	~ 4.39	~ 135	>90	24V	36'	1.97"
L780	~ 780	36	~ 6.72	~ 108	>90	24V	24'	1.97"
L990	~ 990	36	~ 9.36	~ 106	>90	24V	16'	1.97"
RGB-3535	~ 170	36	~ 4.4	~ 39	N/A	24V	23'	1.97"
RGB-3838	~ 280	73	~ 5.0	~ 56	N/A	24V	16'	1.00"
RGB-5050	~ 230	29	~ 7.0	~ 23	N/A	24V	13'	2.46"
RGBW	~ 330	29	~ 7.3	~ 47	N/A	24V	13'	2.46"
TW1865	~ 60-850	73	~ 5.8	~ 10-146	>90	24V	16'	1.97"
TW2740	~ 210-430	73	~ 5.8	~ 36-74	>90	24V	16'	1.97"
Dim-To-Warm	~ 168	73	~ 4.4	~ 38	>90	24V	16'	1.97"

## Ordering Code: JC01 + Tapelight + Accessories + Lengths

JC01	- SLS	- O	- L730	IP20	CT30	- EC	- MC	- 4'			
Extrusion	Lens	Tapelight				End Cap	Mounting	Length			
JC01	SLS – Satined Lens	O – Oslo	L730	~730 lm/ft	IP20	CT27 - 2700K CT30 - 3000K CT35 - 3500K CT40 - 4000K	EC – End Cap	CN180 – Linear Connector	Enter run length		
		F – Florence	L090	~90 lm/ft	IP00	CT27				2700K	
			L200	~200 lm/ft		IP66				CT30	3000K
			L360	~360 lm/ft		CT35				3500K	
			L500	~500 lm/ft		CT40				4000K	
			L780	~780 lm/ft							
			L990	~990 lm/ft							
		RGB-3535	RGB	IP20	N/A						
		RGB-3838	RGB	IP54							
		RGB-5050	RGB	IP20 IP65	N/A						
RGBW	RGBW	IP00 IP54	N/A								
TW1865	TW	IP00	1800-6500K								
TW2740	TW	IP65	2700-4000K								
DTW	Dim-To-Warm	IP00 IP54	CT2130 2100-3000K								

## Power Supply Ordering Codes

DTR		+	60		+	IP67		DTR60IP67 - Dimming, 60 Watt, IP67							
MODEL		+	POWER		+	IP RATING		INPUT	OUTPUT	DIMENSION					
<b>NTR</b> Non-Dimming [UL Recognized]			<b>50</b>	50 Watt		<b>IP00</b> Indoor		88-264V	24V	3.90 x 3.82 x 1.42					
		<b>75</b>	75 Watt	5.08 x 3.82 x 1.50											
		<b>100</b>	100 Watt	6.26 x 3.82 x 1.50											
		<b>150</b>	150 Watt	7.84 x 3.85 x 1.50											
		<b>200</b>	200 Watt	8.46 x 4.53 x 1.18											
		<b>320</b>	320 Watt	8.46 x 4.53 x 1.18											
		<b>750</b>	750 Watt	9.84 x 5.00 x 1.61											
		<b>960</b>	960 Watt	11.60 x 5.00 x 1.61											
		<b>12</b>	12 Watt							<b>IP42</b> Indoor		90-264V	24V	3.03 x 1.57 x 1.14	
		<b>16</b>	16 Watt											3.03 x 1.57 x 1.14	
	<b>25</b>	25 Watt	3.31 x 2.24 x 1.16												
	<b>35</b>	35 Watt	3.31 x 2.24 x 1.16												
	<b>20</b>	20 Watt		<b>IP67</b> Outdoor		90-264V	24V	4.65 x 1.38 x 1.02							
	<b>35</b>	35 Watt						5.83 x 1.57 x 1.18							
	<b>60</b>	60 Watt						6.40 x 1.67 x 1.26							
	<b>100</b>	100 Watt						7.48 x 2.05 x 1.46							
	<b>150</b>	150 Watt						7.52 x 2.48 x 1.48							
	<b>240</b>	240 Watt						9.61 x 2.68 x 1.53							
	<b>320</b>	320 Watt	9.92 x 3.54 x 1.72												
<b>DTR</b> Dimming min 10% (0-10V) [UL Recognized]		<b>16</b>	16 Watt		<b>IP30</b> Indoor		90-305V	24V	5.83 x 1.57 x 1.26						
		<b>25</b>	25 Watt							<b>IP67</b> Outdoor	90-305V	24V	5.83 x 1.57 x 1.26		
		<b>40</b>	40 Watt										6.40 x 1.70 x 1.26		
		<b>60</b>	60 Watt										6.40 x 1.70 x 1.26		
		<b>90</b>	90 Watt										6.34 x 2.40 x 1.42		
		<b>96</b>	96 Watt										8.66 x 2.68 x 1.53		
		<b>120</b>	120 Watt										8.66 x 2.68 x 1.53		
		<b>150</b>	150 Watt										8.97 x 2.68 x 1.58		
		<b>185</b>	185 Watt										8.97 x 2.68 x 1.58		
		<b>240</b>	240 Watt										9.88 x 2.68 x 1.58		
	<b>320</b>	320 Watt	9.92 x 3.54 x 1.72												
	<b>480</b>	480 Watt	10.32 x 4.92 x 1.72												
	<b>600</b>	600 Watt	11.02 X 5.67 X 1.91												
<b>FPD</b> Dimming min 1% (Forward Phase) [UL Recognized]		<b>20</b>	20 Watt		<b>IP67</b> Outdoor		120V	24V	4.92 x 2.20 x 0.79						
		<b>40</b>	40 Watt						4.92 x 2.20 x 0.79						
		<b>60</b>	60 Watt						4.92 x 2.20 x 0.79						
		<b>75</b>	75 Watt						4.92 x 2.20 x 0.79						
		<b>96</b>	96 Watt						4.92 x 2.20 x 0.79						
<b>FPD</b> Dimming min 1% (Forward Phase) with junction box [ETL Listed]		<b>20</b>	20 Watt		<b>IP14</b> Outdoor		120V	24V	5.60 x 2.00 x 2.14						
		<b>40</b>	40 Watt						5.60 x 2.00 x 2.14						
		<b>60</b>	60 Watt						6.62 x 2.58 x 2.33						
		<b>96</b>	96 Watt						6.62 x 2.58 x 2.33						
		<b>150</b>	150 Watt						9.80 x 3.00 x 2.74						
		<b>200</b>	200 Watt						9.80 x 3.00 x 2.74						
	<b>300</b>	300 Watt	10.07 x 4.20 x 3.50												

CUSTOMIZATION	TL48	DC99	LN99	EX99	M99	C99	F48	F48C	IP68
Cutting tapelight to specified length + solder 4ft leadwire	✓						✓	✓	
Daisy Chain: Cut tapelight to specified length + 2", 6", or 12" jumper cable daisy chain between 2 run lengths		✓							
Installing tapelight onto extrusion							✓	✓	
Cutting diffuser to specified length			✓				✓	✓	
Cutting extrusion to specified length				✓			✓	✓	
Miter corner extrusion and diffuser					✓				
Filling extrusion with polyurethane (2 ft submersible)									✓
Customize extrusion to specified color						✓		✓	
Final function and quality inspection	✓	✓	✓	✓	✓	✓	✓	✓	✓