

The JE04 stands out as a compact, 90° corner extrusion, constructed from high-quality anodized aluminum for superior heat dissipation. Ideal for low to medium output tape lights, this small yet versatile member of the JE series is particularly suited for angular installations, enhancing the ease of project specifications with its adaptability in various applications.

**JE04**



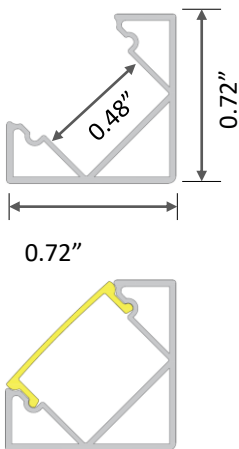
**JE99-SL**

Satined Lens



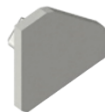
**JE99-CL**

Clear Lens



**JE04-EC**

End Cap



**ZZ99-MCM**

Mounting Clip



**ZZ99-AA**

Adjustable Angle



## Product Detail

Material:	Extruded Aluminum
Color:	Anodized Silver
Dimension (in):	L 78.74" x W 0.72" x H 0.72"
Customization:	Cut to specified length

## Applications

- |  |  |
|--|--|
| <input type="checkbox"/> Surface Mount | <input type="checkbox"/> Narrow Spaces |
| <input type="checkbox"/> Perimeter     | <input type="checkbox"/> Under Cabinet |
| <input type="checkbox"/> Cove          | <input type="checkbox"/> Vanity        |
| <input type="checkbox"/> 90° Corner    | <input type="checkbox"/> Furniture     |
| <input type="checkbox"/> Millwork      | <input type="checkbox"/> Shelf         |

## Compatible LED Tapelight

Product	Output (~lm/ft)	LEDs/ft	Consump. (watt/ft)	Efficacy (~lm/watt)	CRI	Voltage	Max Run Length	Cut Increment
---------	-----------------	---------	--------------------	---------------------	-----	---------	----------------	---------------

### Vienna (High End)

L90	90	36	0.73	123	>90	24V	75'	1.97"
L270	270	36	2.7	108	>90	24V	34'	1.97"
L400	400	36	3.9	109	>90	24V	25'	1.97"
Dim-To-Warm	320	51	2.9	109	>80	24V	10'	3.28"

### Florence (Mid-Range)

L200	200	36	1.6	125	>90	24V	55'	1.97"
L360	360	36	2.9	124	>90	24V	42'	1.97"
L500	500	36	4.3	116	>90	24V	32'	1.97"
RGB	200	36	7.3	29	N/A	24V	16'	1.97"
RGBW	330	29	7.3	47	N/A	24V	16'	2.46"
Tunable White	590	73	5.9	100	>90	24V	16'	1.97"
Dim-To-Warm	168	73	4.4	38	>90	24V	16'	1.97"

### Athens (Economy)

L240	240	36	2.1	117	>90	24V	26'	1.97"
L460	460	36	4.1	114	>90	24V	16'	1.97"

## Ordering Code: JE04 + Tapelight + Accessories + Lengths

JE04	- SL	- F	- L200	IP00	CT35	- EC	- MCM	- 4'		
Extrusion	Lens	Tapelight				End Cap	Mounting	Length		
JE04	CL – Clear Lens	V – Vienna	L90	~90 lm/ft	IP00	CT22	2200K	EC – End Cap	MCM – Mounting Clip	Enter run length
			L270	~270 lm/ft	IP66	CT27	2700K			
			L400	~400 lm/ft		CT30	3000K			
						CT35	3500K			
						CT40	4000K			
		SL – Satined Lens	F – Florence	DTW	Dim-To-Warm	IP00	CT1930		AA – Adj. Angle	
	L200			~200 lm/ft	IP00	CT27	2700K			
	L360			~360 lm/ft	IP66	CT30	3000K			
	L500			~500 lm/ft		CT35	3500K			
						CT40	4000K			
			RGB	RGB	IP00	N/A				
			RGBW	RGBW	IP54					
			TW	Tunable White						
			DTW	Dim-To-Warm	IP00	CT2130				
					IP54	2100-3000K				
		A – Athens	L240	~240 lm/ft	IP00	CT27	2700K			
			L460	~460 lm/ft	IP66	CT30	3000K			
						CT35	3500K			
						CT40	4000K			

## Power Supply Ordering Codes

DTR		+	60		+	IP67		DTR60IP67 - Dimming, 60 Watt, IP67										
MODEL		+	POWER		+	IP RATING		INPUT	OUTPUT	DIMENSION								
<b>NTR</b> Non-Dimming		+	50	50 Watt	+	IP00	Indoor	88-264V	24V	3.90 x 3.82 x 1.42								
				75						75 Watt	5.08 x 3.82 x 1.50							
				100						100 Watt	6.26 x 3.82 x 1.50							
				150						150 Watt	7.84 x 3.85 x 1.50							
				200						200 Watt	8.46 x 4.53 x 1.18							
				320						320 Watt	8.46 x 4.53 x 1.18							
				750						750 Watt	9.84 x 5.00 x 1.61							
				960						960 Watt	11.60 x 5.00 x 1.61							
				12						12 Watt	+	IP42	Indoor	90-264V	24V	3.03 x 1.57 x 1.14		
				16						16 Watt						3.03 x 1.57 x 1.14		
				25						25 Watt						3.31 x 2.24 x 1.16		
				35						35 Watt						3.31 x 2.24 x 1.16		
		+	20	20 Watt	+	IP67	Outdoor	90-264V	24V	4.65 x 1.38 x 1.02								
				35						35 Watt	5.83 x 1.57 x 1.18							
				60						60 Watt	6.40 x 1.67 x 1.26							
				100						100 Watt	7.48 x 2.05 x 1.46							
				150						150 Watt	7.52 x 2.48 x 1.48							
				240						240 Watt	9.61 x 2.68 x 1.53							
				320						320 Watt	9.92 x 3.54 x 1.72							
<b>DTR</b> Dimming min 10% (0-10V)		+	16	16 Watt	+	IP30	Indoor	90-305V	24V	5.83 x 1.57 x 1.26								
				25						25 Watt	+	IP67	Outdoor	90-305V	24V	5.83 x 1.57 x 1.26		
				40						40 Watt						6.40 x 1.70 x 1.26		
				60						60 Watt	6.40 x 1.70 x 1.26							
				90						90 Watt	6.34 x 2.40 x 1.42							
				96						96 Watt	8.66 x 2.68 x 1.53							
				120						120 Watt	8.66 x 2.68 x 1.53							
				150						150 Watt	8.97 x 2.68 x 1.58							
				185						185 Watt	8.97 x 2.68 x 1.58							
				240						240 Watt	9.88 x 2.68 x 1.58							
				320						320 Watt	9.92 x 3.54 x 1.72							
		+	480	480 Watt	10.32 x 4.92 x 1.72													
				600	600 Watt	11.02 x 5.67 x 1.91												
				<b>FPD</b> Dimming min 1% (Forward Phase)		+	20	20 Watt	+	IP67	Outdoor	120V	24V	4.92 x 2.20 x 0.79				
								40						40 Watt	4.92 x 2.20 x 0.79			
								60						60 Watt	4.92 x 2.20 x 0.79			
								75						75 Watt	4.92 x 2.20 x 0.79			
96	96 Watt	4.92 x 2.20 x 0.79																
<b>FPD</b> Dimming min 1% (Forward Phase) with junction box		+	20	20 Watt	+	IP67	Outdoor	120V	24V	5.60 x 2.00 x 2.14								
				40						40 Watt	5.60 x 2.00 x 2.14							
				60						60 Watt	6.62 x 2.58 x 2.33							
				96						96 Watt	6.62 x 2.58 x 2.33							
				150						150 Watt	9.80 x 3.00 x 2.74							
				200						200 Watt	9.80 x 3.00 x 2.74							
300	300 Watt	10.07 x 4.20 x 3.50																

CUSTOMIZATION	TL48	LN99	EX99	M99	C99	F48	F48C	IP68
Cutting tapelight to specified length + solder 4ft leadwire	✓					✓	✓	
Installing tapelight onto extrusion						✓	✓	
Cutting diffuser to specified length		✓				✓	✓	
Cutting extrusion to specified length			✓			✓	✓	
Miter corner extrusion and diffuser				✓				
Filling extrusion with polyurethane (2 ft submersible)								✓
Customize extrusion to specified color					✓		✓	
Final function and quality inspection	✓	✓	✓	✓	✓	✓	✓	✓