

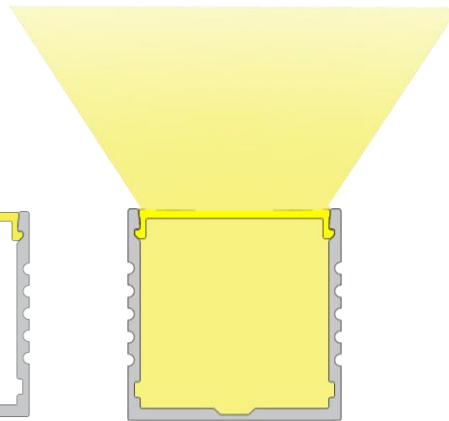
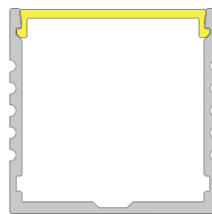
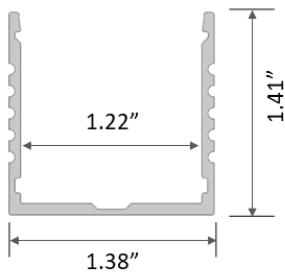
The JK02, constructed from high alloy aluminum, excels in heat dissipation, ensuring longevity and performance across all tape light lines. It is especially adept with the Madrid 120V RGBW tape, guaranteeing uniform illumination without pixelation. This extrusion features a central indentation for direct, clip-free mounting, allowing for secure and straightforward installation on any surface.



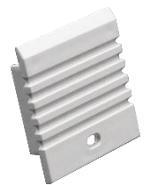
**JK02**



**JF02 + JK02-SL**  
Satined Lens



**JK02-EC**  
End Cap



## Product Detail

Material: Extruded Aluminum  
 Color: Anodized Silver  
 Dimension (in): L 78.74" x W 1.38" x H 1.41"  
 Customization: Cut to specified length

## Applications

- Surface Mount
- Ceiling
- Hallways
- Office
- Wall

## Compatible LED Tapelight

Product	Output (lm/ft)	LEDs/ft	Consump. (watt/ft)	Efficacy (lm/watt)	CRI	Voltage	Max Length	Min Cut
---------	----------------	---------	--------------------	--------------------	-----	---------	------------	---------

### Florence (Specification Grade)

L90	~ 90	36	~ 0.73	~ 123	>90	24V	75'	1.97"
L200	~ 200	36	~ 1.46	~ 140	>90	24V	49'	1.97"
L360	~ 360	36	~ 3.12	~ 117	>90	24V	42'	1.97"
L500	~ 500	36	~ 4.39	~ 135	>90	24V	36'	1.97"
L780	~ 780	36	~ 6.72	~ 108	>90	24V	24'	1.97"
L990	~ 990	36	~ 9.36	~ 106	>90	24V	16'	1.97"
RGB-3535	~ 170	36	~ 4.4	~ 39	N/A	24V	23'	1.97"
RGB-3838	~ 280	73	~ 5.0	~ 56	N/A	24V	16'	1.00"
RGB-5050	~ 230	29	~ 7.0	~ 23	N/A	24V	13'	2.46"
RGBW	~ 330	29	~ 7.3	~ 47	N/A	24V	13'	2.46"
TW1865	~ 60-850	73	~ 5.8	~ 10-146	>90	24V	16'	1.97"
TW2740	~ 210-430	73	~ 5.8	~ 36-74	>90	24V	16'	1.97"
Dim-To-Warm	~ 168	73	~ 4.4	~ 38	>90	24V	16'	1.97"

### Athens (Economy)

L240	~ 240	36	~ 2.29	~ 115	>90	24V	39'	1.97"
L460	~ 460	36	~ 4.27	~ 115	>90	24V	26'	1.97"
L680	~ 680	36	~ 6.40	~ 105	>90	24V	20'	1.97"

### Madrid (Line Voltage)

L300	~ 300	18	~ 4.0	~ 75	>90	120V	164'	4.0"
L500	~ 500	28	~ 6.0	~ 85	>90	120V	100'	3.0"
RGBW	n/a	60	~ 3.0	n/a	>90	120V	164'	1.0'

## Compatible SOB Tapelight

Product	Output (lm/ft)	IP Rating	Consump. (watt/ft)	Efficacy (lm/watt)	CRI	Voltage	Max Length	Min Cut
---------	----------------	-----------	--------------------	--------------------	-----	---------	------------	---------

### Coblence H (High CRI)

L195	~ 195	IP20	~ 2.93	~ 80	>97	24V	49'	1.97"
L220	~ 220	IP67	~ 2.93	~ 80	>97	24V	65'	1.97"
L325	~ 325	IP67	~ 4.88	~ 70	>97	24V	32'	1.16"







### Coblence S (Specification Grade)

L280	~ 280	IP20	~ 2.93	~ 100	>90	24V	49'	1.97"
L335	~ 335	IP67	~ 2.93	~ 120	>90	24V	65'	1.97"
L465	~ 465	IP67	~ 4.88	~ 100	>90	24V	32'	1.16"
RGBW	RGBW	IP67	~ 4.27	~ 50	N/A	24V	16'	2.19"

## Ordering Code: JK02 + Tapelight + Accessories + Lengths

JK02	- SL	- M	- RGBW	IP65	N/A	- EC	- 4'	
Extrusion	Lens	Tapelight				End Cap	Length	
JK02	SL – Satined Lens	F – Florence	L090	~90 lm/ft	IP00	CT27	2700K	EC – End Cap Enter run length
			L200	~200 lm/ft	IP66	CT30	3000K	
			L360	~360 lm/ft		CT35	3500K	
			L500	~500 lm/ft		CT40	4000K	
			L780	~780 lm/ft				
			L990	~990 lm/ft				
			RGB-3535	RGB	IP20	N/A		
			RGB-3838	RGB	IP54			
			RGB-5050	RGB	IP20	N/A		
					IP65			
			RGBW	RGBW	IP00	N/A		
					IP54			
		TW1865	TW	IP00	1800-6500K			
		TW2740	TW	IP65	2700-4000K			
		DTW	Dim-To-Warm	IP00	CT2130			
				IP54	2100-3000K			
		A – Athens	L240	~240 lm/ft	IP00	CT27	2700K	
			L460	~460 lm/ft	IP66	CT30	3000K	
			L680	~680 lm/ft		CT35	3500K	
					CT40	4000K		
		M – Madrid	L300	~300 lm/ft	IP65	CT27	2700K	
			L500	~500 lm/ft		CT30	3000K	
						CT35	3500K	
					CT40	4000K		
	RGBW	RGBW	IP65	N/A				
CH – Coblenz H	L195	~195 lm/ft	IP20	CT27	2700K			
	L220	~220 lm/ft	IP67	CT30	3000K			
	L235	~235 lm/ft	IP67	CT35	3500K			
			CT40	4000K				
CS – Coblenz S	L280	~280 lm/ft	IP20	CT27	2700K			
	L335	~335 lm/ft	IP67	CT30	3000K			
	L465	~465 lm/ft	IP67	CT35	3500K			
			CT40	4000K				
	RGBW	RGBW	IP67	N/A				

## Power Supply Ordering Codes

DTR		+	60		+	IP67		DTR60IP67 - Dimming, 60 Watt, IP67					
MODEL		+	POWER		+	IP RATING		INPUT	OUTPUT	DIMENSION			
<b>NTR</b> Non-Dimming [UL Recognized]			<b>50</b>	50 Watt		<b>IP00</b> Indoor	88-264V	24V	3.90 x 3.82 x 1.42				
		<b>75</b>	75 Watt	5.08 x 3.82 x 1.50									
		<b>100</b>	100 Watt	6.26 x 3.82 x 1.50									
		<b>150</b>	150 Watt	7.84 x 3.85 x 1.50									
		<b>200</b>	200 Watt	8.46 x 4.53 x 1.18									
		<b>320</b>	320 Watt	8.46 x 4.53 x 1.18									
		<b>750</b>	750 Watt	9.84 x 5.00 x 1.61									
		<b>960</b>	960 Watt	11.60 x 5.00 x 1.61									
		<b>12</b>	12 Watt						<b>IP42</b> Indoor	90-264V	24V	3.03 x 1.57 x 1.14	
		<b>16</b>	16 Watt									3.03 x 1.57 x 1.14	
	<b>25</b>	25 Watt	3.31 x 2.24 x 1.16										
	<b>35</b>	35 Watt	3.31 x 2.24 x 1.16										
	<b>20</b>	20 Watt		<b>IP67</b> Outdoor	90-264V	24V	4.65 x 1.38 x 1.02						
	<b>35</b>	35 Watt					5.83 x 1.57 x 1.18						
	<b>60</b>	60 Watt					6.40 x 1.67 x 1.26						
	<b>100</b>	100 Watt					7.48 x 2.05 x 1.46						
	<b>150</b>	150 Watt					7.52 x 2.48 x 1.48						
	<b>240</b>	240 Watt					9.61 x 2.68 x 1.53						
	<b>320</b>	320 Watt					9.92 x 3.54 x 1.72						
<b>DTR</b> Dimming min 10% (0-10V) [UL Recognized]		<b>16</b>	16 Watt		<b>IP30</b> Indoor	90-305V	24V	5.83 x 1.57 x 1.26					
		<b>25</b>	25 Watt					<b>IP67</b> Outdoor	90-305V	24V	5.83 x 1.57 x 1.26		
		<b>40</b>	40 Watt								6.40 x 1.70 x 1.26		
		<b>60</b>	60 Watt								6.40 x 1.70 x 1.26		
		<b>90</b>	90 Watt								6.34 x 2.40 x 1.42		
		<b>96</b>	96 Watt								8.66 x 2.68 x 1.53		
		<b>120</b>	120 Watt								8.66 x 2.68 x 1.53		
		<b>150</b>	150 Watt								8.97 x 2.68 x 1.58		
		<b>185</b>	185 Watt								8.97 x 2.68 x 1.58		
		<b>240</b>	240 Watt								9.88 x 2.68 x 1.58		
	<b>320</b>	320 Watt	9.92 x 3.54 x 1.72										
	<b>480</b>	480 Watt	10.32 x 4.92 x 1.72										
	<b>600</b>	600 Watt	11.02 X 5.67 X 1.91										
<b>FPD</b> Dimming min 1% (Forward Phase) [UL Recognized]		<b>20</b>	20 Watt		<b>IP67</b> Outdoor	120V	24V	4.92 x 2.20 x 0.79					
		<b>40</b>	40 Watt					4.92 x 2.20 x 0.79					
		<b>60</b>	60 Watt					4.92 x 2.20 x 0.79					
		<b>75</b>	75 Watt					4.92 x 2.20 x 0.79					
		<b>96</b>	96 Watt					4.92 x 2.20 x 0.79					
<b>FPD</b> Dimming min 1% (Forward Phase) with junction box [ETL Listed]		<b>20</b>	20 Watt		<b>IP14</b> Outdoor	120V	24V	5.60 x 2.00 x 2.14					
		<b>40</b>	40 Watt					5.60 x 2.00 x 2.14					
		<b>60</b>	60 Watt					6.62 x 2.58 x 2.33					
		<b>96</b>	96 Watt					6.62 x 2.58 x 2.33					
		<b>150</b>	150 Watt					9.80 x 3.00 x 2.74					
		<b>200</b>	200 Watt					9.80 x 3.00 x 2.74					
	<b>300</b>	300 Watt	10.07 x 4.20 x 3.50										

CUSTOMIZATION	TL48	DC99	LN99	EX99	M99	C99	F48	F48C	IP68
Cutting tapelight to specified length + solder 4ft leadwire	✓						✓	✓	
Daisy Chain: Cut tapelight to specified length + 2", 6", or 12" jumper cable daisy chain between 2 run lengths		✓							
Installing tapelight onto extrusion							✓	✓	
Cutting diffuser to specified length			✓				✓	✓	
Cutting extrusion to specified length				✓			✓	✓	
Miter corner extrusion and diffuser					✓				
Filling extrusion with polyurethane (2 ft submersible)									✓
Customize extrusion to specified color						✓		✓	
Final function and quality inspection	✓	✓	✓	✓	✓	✓	✓	✓	✓