

FlexGround Specifications



Beulux FlexGround is walk-over rated and IK10 certified, designed for demanding architectural applications. Its horizontal flexibility and 100% uniform, pixel-free illumination allow the creation of smooth, curved, and fully homogeneous light lines. Ideal for concrete pour installations, wooden decks, and a wide range of outdoor and architectural surfaces.

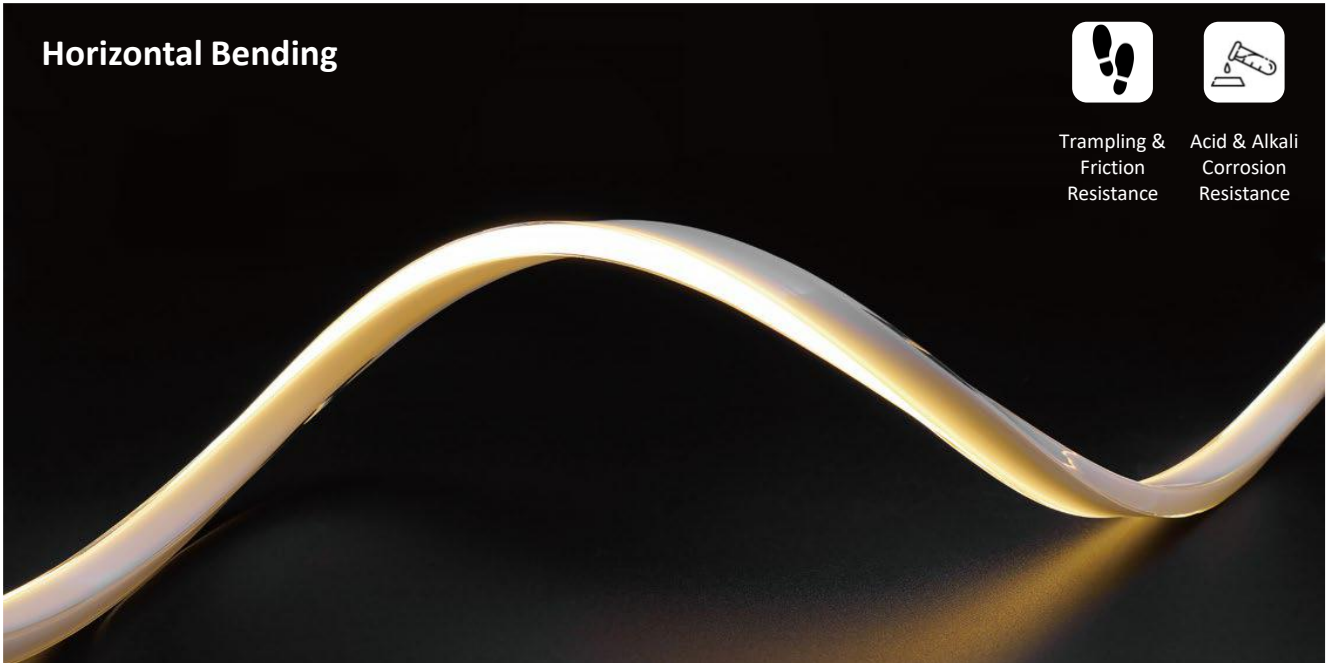
Horizontal Bending



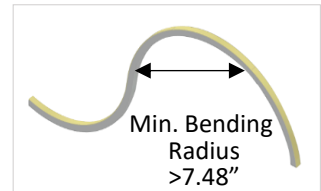
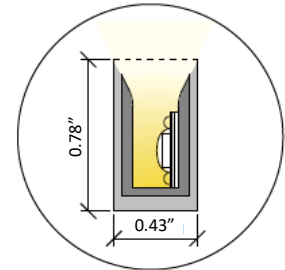
Trampling & Friction Resistance



Acid & Alkali Corrosion Resistance



- Dot free and perfectly homogeneous linear LED light line
- IK10 rating, robust and durable composition
- Wear-resistance, step-resistance, pressure-resistance, corrosion-resistance, yellowing-resistance
- High trampling and friction resistance
- Waterproof & Dustproof
- Flush molded end caps



Technical Information

Model	Product	CCT	Output (lm/ft)	Consump. (watt/ft)	Efficacy (lm/watt)	CRI	Voltage	Max Length	Min Cut
FlexGround	L215	2700K	~ 185	~ 4.6 W	~ 40 lm	>90	24V	16.4'	1"
		3000K	~ 205	~ 4.6 W	~ 45 lm	>90	24V	16.4'	1"
		3500K	~ 215	~ 4.6 W	~ 50 lm	>90	24V	16.4'	1"
		4000K	~ 230	~ 4.6 W	~ 50 lm	>90	24V	16.4'	1"

Ordering Code

Example: FG--L215IP67CT30-MC-DUD-F-6'
 FlexGround, ~215 lm/ft, IP67, 3000K, Mounting Clip, Dimming Driver, Front Entry, 6ft

FG	L215	IP67	CT30	MC	DUD	F	6'
----	------	------	------	----	-----	---	----

Model	Output	IP Rating	CCT	Accessories	Driver	PF Entry	Length
FG FlexGround	L215 ~ 215 lm/ft	IP67 Outdoor	CT27 2700K CT30 3000K CT35 3500K CT40 4000K	AL Linear Extrusion FLX Flexible Extrusion MC Mounting Clip JC Jumper Cable	NTR Non-Dimming DUD Dimming 0.1%-100% Triac/0-10V/ 10V PWM/ Potentiometer FPD Dimming 1%-100%	F Front B Bottom	Enter run length

Powerfeed Entry

Front



Bottom



Accessories

FG20-AL
Linear Extrusion



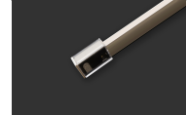
FG20-FLX
Flexible Extrusion



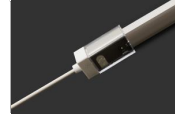
FG20-MC
Mounting Clip



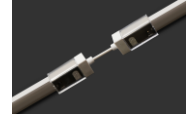
FG20-EC
End Cap



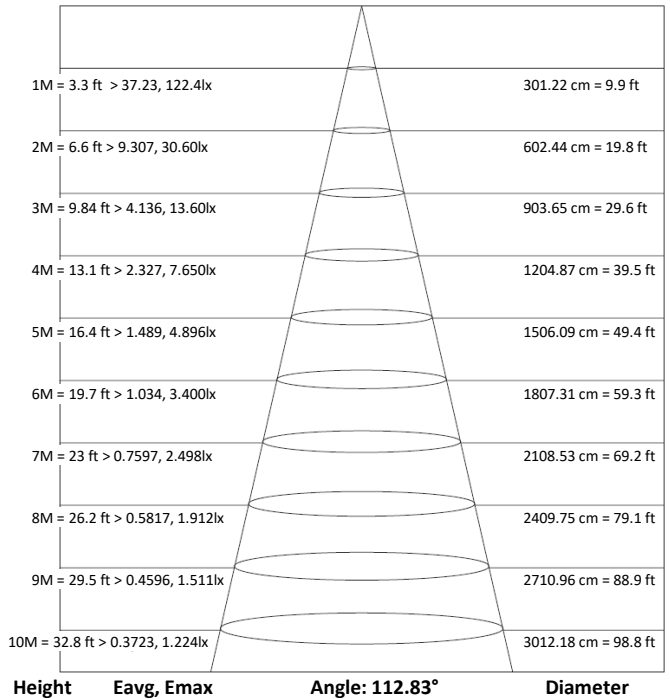
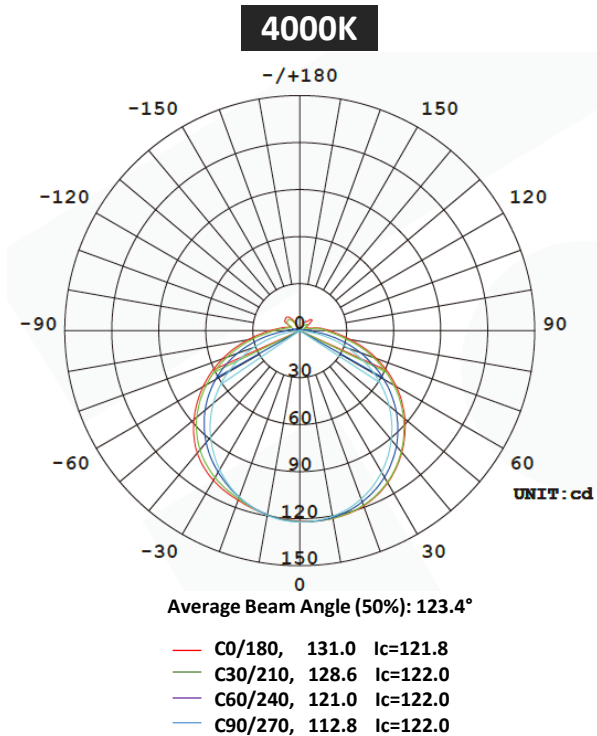
FG20-PF
Powerfeed



FG20-JC
Jumper Cable

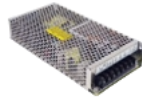


Photometric



Power Supply Ordering Codes

DUD		+	60		+	IP65		DUD60IP65 - Dimming, 60 Watt, IP65								
MODEL		+	POWER		+	IP RATING		INPUT	OUTPUT	DIMENSION						
NTR Non-Dimming		+	50	50 Watt	+	IP00	Indoor	88-264V	24V	3.90 x 3.82 x 1.42						
			75	75 Watt						5.08 x 3.82 x 1.50						
			100	100 Watt						6.26 x 3.82 x 1.50						
			150	150 Watt						7.84 x 3.85 x 1.50						
			200	200 Watt						8.46 x 4.53 x 1.18						
			320	320 Watt						8.46 x 4.53 x 1.18						
			750	750 Watt						9.84 x 5.00 x 1.61						
			960	960 Watt						11.60 x 5.00 x 1.61						
			12	12 Watt						+	IP42	Indoor	90-264V	24V	3.03 x 1.57 x 1.14	
			16	16 Watt											3.03 x 1.57 x 1.14	
			25	25 Watt											3.31 x 2.24 x 1.16	
			35	35 Watt											3.31 x 2.24 x 1.16	
		+	20	20 Watt	+	IP67	Outdoor	90-264V	24V	4.65 x 1.38 x 1.02						
			35	35 Watt						5.83 x 1.57 x 1.18						
			60	60 Watt						6.40 x 1.67 x 1.26						
			100	100 Watt						7.48 x 2.05 x 1.46						
			150	150 Watt						7.52 x 2.48 x 1.48						
			240	240 Watt						9.61 x 2.68 x 1.53						
			320	320 Watt						9.92 x 3.54 x 1.72						
			DUD Dimming 0.1%-100%	Universal: Triac/0-10V/ 10V PWM/ Potentiometer						+	18	18 Watt	+	IP65	Outdoor	110-277V
24	24 Watt	5.04 x 2.09 x 0.83														
36	36 Watt	5.98 x 2.32 x 0.83														
48	48 Watt	5.98 x 2.32 x 0.83														
60	60 Watt	5.98 x 2.32 x 0.83														
80	80 Watt	7.17 x 2.32 x 0.83														
96	96 Watt	7.16 x 2.48 x 1.49														
120	120 Watt	7.16 x 2.48 x 1.49														
150	150 Watt	9.92 x 2.48 x 1.49														
200	200 Watt	9.92 x 2.48 x 1.49														
300	300 Watt	12.1 x 2.48 x 1.49														
FPD Dimming min 1% (Forward Phase)		+			40	40 Watt	+	IP67	Outdoor		120V	24V				
			60	60 Watt	4.92 x 2.20 x 0.79											
			75	75 Watt	4.92 x 2.20 x 0.79											
			96	96 Watt	4.92 x 2.20 x 0.79											
FPD Dimming min 1% (Forward Phase) with junction box		+	20	20 Watt	+	IP14	Indoor	120V	24V	5.60 x 2.00 x 2.14						
			40	40 Watt						5.60 x 2.00 x 2.14						
			60	60 Watt						6.62 x 2.58 x 2.33						
			96	96 Watt						6.62 x 2.58 x 2.33						
			150	150 Watt						9.80 x 3.00 x 2.74						
			200	200 Watt						9.80 x 3.00 x 2.74						
300	300 Watt	10.07 x 4.20 x 3.50														







Warning

Warranty is VOID if any of the below are violated

READ AND FOLLOW ALL BELOW SAFETY INSTRUCTIONS

- Avoid any mechanical stress on the LED tape and its components
- Do not touch top of LED to prevent wire bond damage
- Do not power on the tape when rolled up in the reel
- The electrical circuit must not be damaged or interrupted during assembly
- Use only with Listed Class 2 power unit
- Follow the voltage specifications and electrical polarity to avoid irreversible damage to the LED tape
- Only qualified personnel with appropriate training and following the electrical and safety standards should carry out the installation
- The LED components are sensitive to electrostatic discharge and may be installed in the location or site only if appropriate EOS/ESD protection measures have been taken
- Do not look directly into the LEDs to prevent harm to the eyes
- Exposure of IP00 tape to moisture or very humid environments must be avoided. Any LED tape malfunction due to corrosion damage is not subject to product warranty.
- LED strip can be cut only at the marked locations or between 2 solder points. Do not touch electrical components.
- The minimum bending radius is 1 ¼ ". Bend only in areas with no electronic components.
- The maximum light output and lifespan of the LED products depend on effective thermal design. If the maximum allowed temperature is exceeded, the life of the LED tape will be reduced by great margin or eventually destroyed.
- Appropriate heat dissipation management is required by the installation. Always apply the LED tape to a metallic heat sink and ensure the maximum temperature on the tape surface does not exceed 150°F.



Caution

Warranty is VOID if any of the below are violated

