

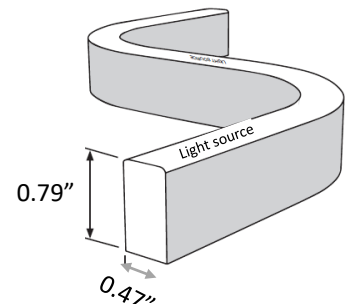
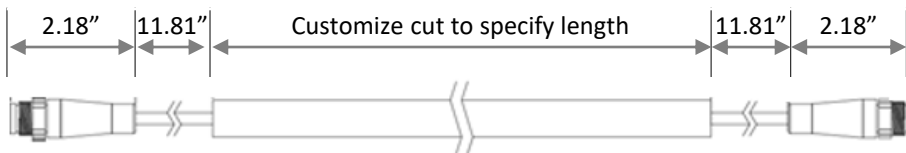
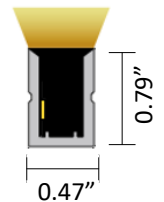
Liquid Light – Large Side View



Liquid Light Large Side View bends in the horizontal axis with a minimum radius of 5.9" and has a cross section of 0.47" x 0.79 ". The opal polyurethane guarantees UV stability and is solvent and saltwater resistant. Along with IP68 rating and LM-80 compliance, this product is fully submersible and safe to be used in fountains, yachts, bridges, and marine applications. Provides perfectly uniform light without showing any pixilation.

3 Step MacAdam binning and perfect uniformity due to "one bin only" throughout the entire product results in excellent performance for both indoor and outdoor applications.

Mounts with clips for curved applications or extrusions for straight runs.



Liquid Light – Large Side View



Technical Information

CCT	Voltage	LEDs/Ft	CRI	Cut Increment	Low Output = 1.5 W/Ft				Mid Output = 3.1 W/Ft				High Output = 4.6 W/Ft			
					Efficacy Lm/W	Lm/Ft	Max Section	Max Run	Efficacy Lm/W	Lm/Ft	Max Section	Max Run	Efficacy Lm/W	Lm/Ft	Max Section	Max Run
2700K	24V	44	>90	1.6"	64	96	16'	68'	60	186	16'	42'	60	276	16'	32'
3000K	24V	44	>90	1.6"	66	99	16'	68'	62	192	16'	42'	62	285	16'	32'
3200K	24V	44	>90	1.6"	66	99	16'	68'	62	192	16'	42'	62	285	16'	32'
3500K	24V	44	>90	1.6"	66	99	16'	68'	62	192	16'	42'	62	285	16'	32'
4000K	24V	44	>90	1.6"	67	101	16'	68'	63	195	16'	42'	63	290	16'	32'
5000K	24V	44	>90	1.6"	67	101	16'	68'	63	195	16'	42'	63	290	16'	32'
6500K	24V	44	>90	1.6"	67	101	16'	68'	63	195	16'	42'	63	290	16'	32'
T.W	24V	73	>80	2.0"	69	103	16'	26'	64	199	16'	16'	63	290	9.8'	9.8'
Red	24V	44	N/A	1.6"	19	29	16'	68'	18	55	16'	42'	18	81	16'	32'
Green	24V	44	N/A	1.6"	37	55	16'	68'	35	107	16'	42'	32	145	16'	32'
Blue	24V	44	N/A	1.6"	9	13	16'	68'	8	26	16'	42'	8	35	16'	32'
Amber	24V	44	N/A	1.6"	19	29	16'	68'	18	56	16'	42'	18	81	16'	32'
Pink	24V	44	N/A	1.6"	27	40	16'	68'	25	77	16'	42'	25	113	16'	32'
RGB	24V	26	N/A	2.8"	25	37	16'	26'	23	72	16'	16'	23	104	9.8'	9.8'
RGBW27	24V	26	N/A	2.8"	53	80	16'	26'	50	156	16'	16'	49	227	9.8'	9.8'
RGBW30	24V	26	N/A	2.8"	32	48	16'	26'	30	94	16'	16'	30	137	9.8'	9.8'
RGBW40	24V	26	N/A	2.8"	35	52	16'	26'	32	100	16'	16'	32	146	9.8'	9.8'
RGBW65	24V	26	N/A	2.8"	35	52	16'	26'	32	100	16'	16'	32	146	9.8'	9.8'

Max. Ambient Temperature	122° F	113° F	95° F
--------------------------	--------	--------	-------

Note:

- Max Section: Maximum length per section
- Max Run: Maximum length per run (combine multiple sections to equal max run length)

Ordering Code:

Example: LLLS-3130-F-16'

Liquid Light Large Side View, 192 lm/ft, 3000K, front cable entry, 16 ft

LLLS	31	30	F	16'
MODEL	OUTPUT	COLOR TEMPERATURE	CABLE ENTRY	RUNLENGTH
LLLS = Liquid Light Large Side View	15 = Low Output 31 = Mid Output 46 = High Output	27 = 2700k 30 = 3000k 35 = 3500k	40 = 4000k 50 = 5000k 65 = 6500k	F = Front S = Side B = Bottom
		SR = Static Red SG = Static Green SB = Static Blue SA = Static Amber SP = Static Pink RGB = Red/Green/Blue		Enter run length
		RGBW27 = 2700k RGBW30 = 3000k RGBW40 = 4000k RGBW65 = 6500k		
		TW = Tunable White (2700k-6500k)		

Liquid Light – Large Side View



Compatible Extrusions & Accessories

Aluminum
Extrusion



LLLS02-AL

Curved
Extrusion



LLLS02-CAL

Mounting
Clip



LLLS02-MC

End
Cap



LLLS02-EC

Holding
Clip



LLLS02-EC

2 Pin
Connector



LLL-C2

3 Pin
Connector



LLL-C3

4 Pin
Connector



LLL-C4

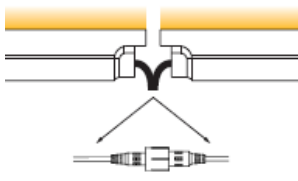
5 Pin
Connector



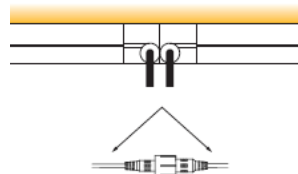
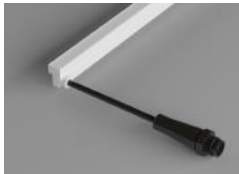
LLL-C5

Cable Entry

Front

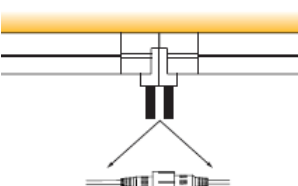


Side

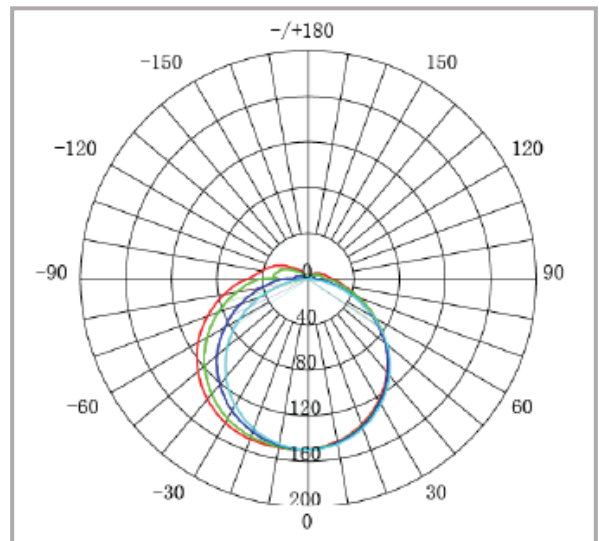


Seamless Connection

Bottom



Photometric @ 3000K IES File



Average Beam Angle (50%) 125.7°

Unit: cd

- C0/180, 136.4°
- C30/210, 131.3°
- C60/240, 120.6°
- C90/270, 114.5°

Liquid Light – Large Side View



Power Supply Ordering Code

DTR + 60 + IP67 = Dimming, 60 watt, IP67, 90-305V output, 24V

1 - Model	2 - Power	3 - IP	Input	Output	Dimension (Inch) LxWxH
NTR = Non-Dimming	50 = 50 watt 75 = 75 watt 100 = 100 watt 150 = 150 watt	IP00 = Indoor	88-264V	24V	3.90 X 3.82 X 1.42 5.08 X 3.82 X 1.50 6.26 X 3.82 X 1.50 7.84 X 3.85 X 1.50
	12 = 12 watt 16 = 16 watt 25 = 25 watt 35 = 35 watt	IP42 = Indoor	90-264V		3.03 X 1.57 X 1.14 3.03 X 1.57 X 1.14 3.31 X 2.24 X 1.16 3.31 X 2.24 X 1.16
	20 = 20 watt 35 = 35 watt 60 = 60 watt 100 = 100 watt	IP67 = Outdoor	90-264V		4.65 X 1.38 X 1.02 5.83 X 1.57 X 1.18 6.40 X 1.67 X 1.26 7.48 X 2.05 X 1.46
DTR = Dimming (0-10V)	16 = 16 watt 25 = 25 watt 40 = 40 watt 60 = 60 watt 90 = 90 watt 100 = 100 watt 120 = 120 watt 150 = 150 watt 185 = 185 watt 240 = 240 watt 320 = 320 watt 600 = 600 watt	IP67 = Outdoor	90-305V	24V	5.83 X 1.57 X 1.26 5.83 X 1.57 X 1.26 6.40 X 1.70 X 1.26 6.40 X 1.70 X 1.26 6.34 X 2.40 X 1.42 8.66 X 2.68 X 1.53 8.66 X 2.68 X 1.53 8.97 X 2.68 X 1.58 8.97 X 2.68 X 1.58 9.88 X 2.68 X 1.58 9.92 X 3.54 X 1.72 11.02 X 5.67 X 1.91
FPD= Dimming (Forward Phase)	20 = 20 watt 40 = 40 watt 60 = 60 watt 75 = 75 watt 96 = 96 watt	IP67 = Outdoor	120V	24V	4.92 X 1.97 X 0.77 4.92 X 1.97 X 0.77 4.92 X 1.97 X 0.77 4.92 X 1.97 X 0.77 4.92 X 1.97 X 0.77

Liquid Light – Large Side View



With an opal polyurethane coating and dense LEDs per foot the Liquid Light Large Side View can provide simple and elegant lighting, which is dot-free, with .26" width.

The Liquid Light has extreme flexibility with 1.18" horizontal bending radius, which makes your various designs come to light; such as linear lines, triangles, squares, and nearly any organic shape you desire.



The Liquid Light Large Side View is anti-UV and anti-yellowing, which could be applied to outdoor lighting applications, such as yachts, bridges, etc.

Different IP-rated connectors are available for various applications, but if installed under water, please ensure that the connector or cable connection is out of the water.